

12924 TDW Product tanker

M/T FURENÄS

Furetank Rederi AB, Donsö, Sweden

Year: 1998/ SØVIKNES VERFT A/S



Dimension

Length over all----- 136,7 m
Breadth----- 21,50 m
Depth ----- 10,5 m
Draft----- 8,00 m

Tonnage

DWT Summer ----- 12924 t
Gross ----- 8930 t
Netto ----- 4188 t

Capacity

Cargo 98% ----- 14513 cu.m
Ballast ----- 6,309 cu.m
HFO ----- 481 cu.m
Do ----- 115 cu.m
FW----- 48/496 cu.m

Heating

Cargo tank----- Heat ex
Slop tanks ----- Coils

Pumps

Cargo pumps ----- 12x330 cu/h
Slop pumps ----- 2x100 cu/h
Ballast pumps ----- 2x460 cu/h
Discharge cap----- 2640 cu/h

Machinery

Main engine----- 5,400 Kw
Aux eng ----- 3x750 Kw
Thermal oil boilers--- 2x2910kw
Bowthruster ----- 590 Kw
Speed ----- 15,4 Kn

Class: Bureau Veritas.

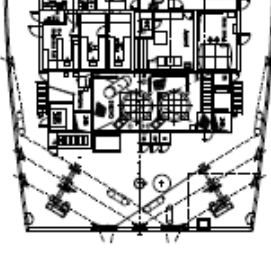
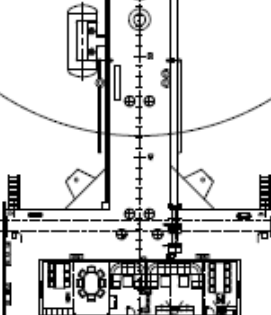
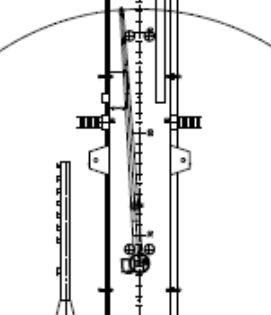
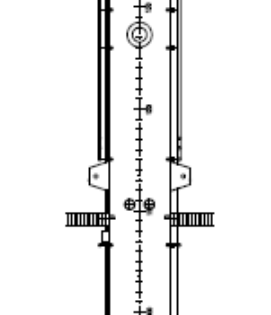
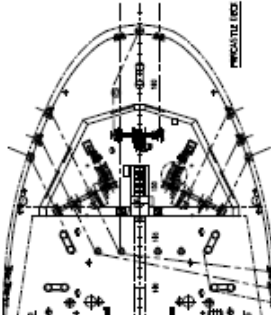
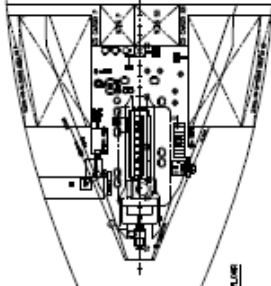
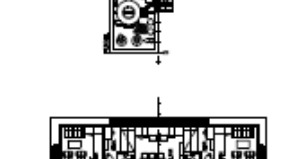
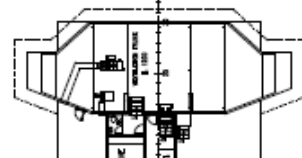
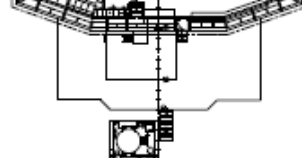
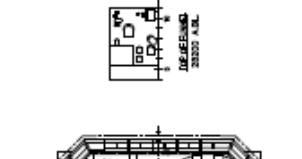
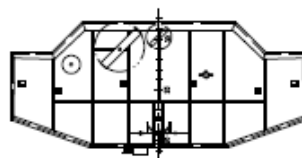
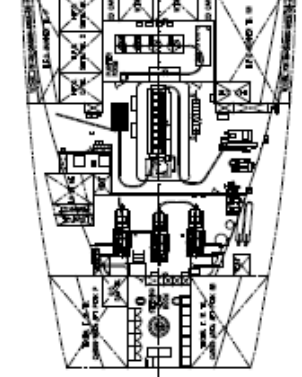
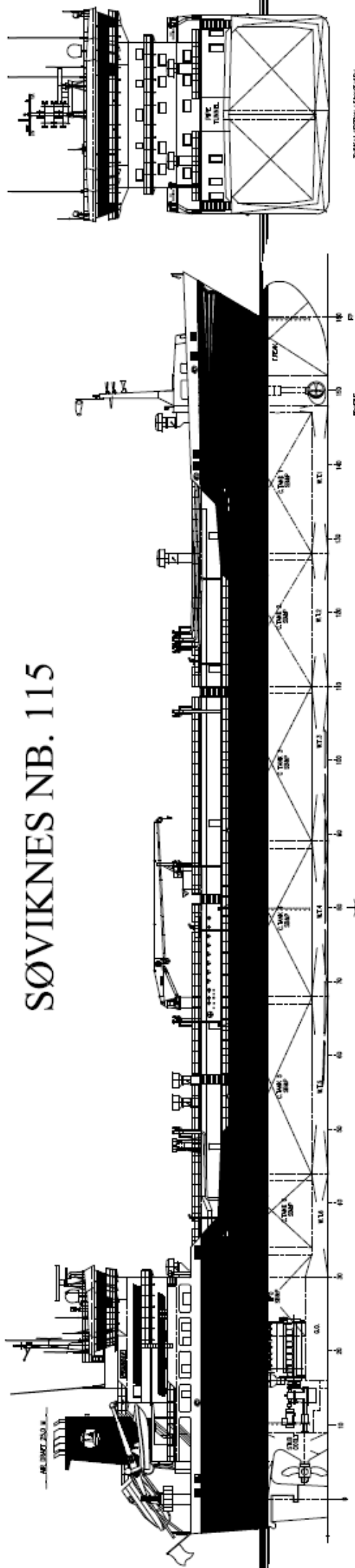
1+HULL, +MACH, OIL/CHEM
TANKER, IMO TYPE 2,
ESP, UNRESTRICTED NAVIGATION
ICE CLASS 1A, AUT-UMS, MON
SHAFT, STAR HULL STAR MACH,
ERS-S, ASSISTED PROPULSION BY
AZIMUTH THRUSTER.



FURETANK REDERI AB

Telephone +46 31 97 32 70 (24 h)
Fax +46 31 97 32 71
e-mail furetank@furetank.se

SØVIKNES NB. 115



GENERAL:
 LENGTH OVER ALL 136.7 M
 LENGTH BETWEEN PERPENSICULARS 118.5 M
 BEAM TO UPPER DECK 32.0 M
 BEAM AT DECK 26.0 M
 BRIGHTNESS AT DECK 1000 TON DRAUGHT 2000 TON
 DRAUGHT TO DECK 1000 TON 2000 TON
 CLASS
 BUILT IN NORWAY
 BUILT IN 1965

GENERAL ARRANGEMENT:
 PETROLEUM PRODUCT AND CHEMICAL TANKER
 TYPE: P-10285-104-01
 IACS: 1000 (1000-10)

NO. 115
 YEAR 1965
 DRAWING NO. 1000-10
 SHEET NO. 115

